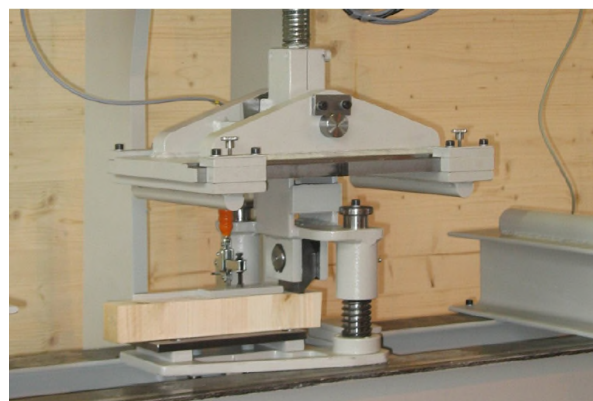
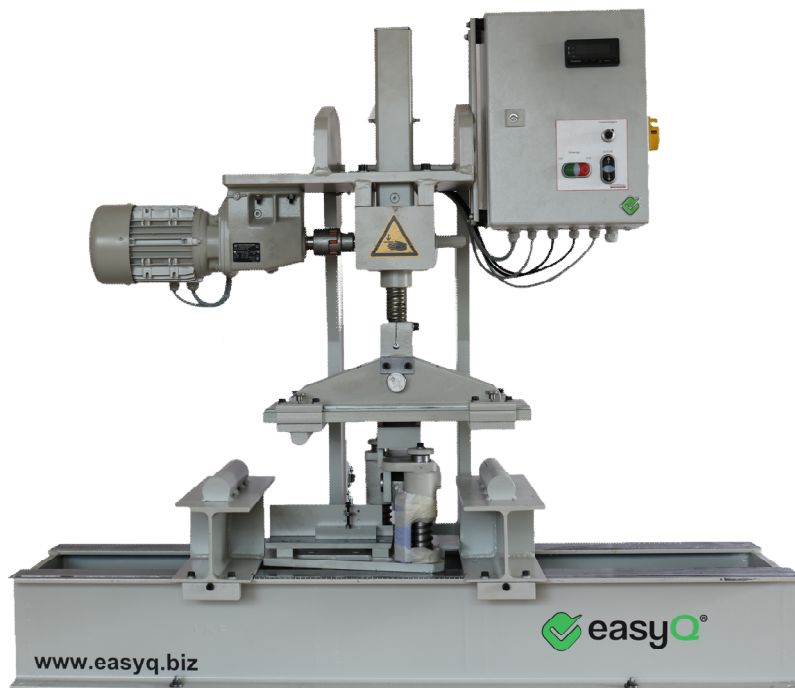


**easyQ  BPM**

Bending- and Shear test machine for glued wood

---

**BPM-50**



**Functions**

Four-point bending testmachine according EN14080 / EN 408 for construction timber products, particular suitable for testing of Finger Joints.  
Further standards on request.

Bearing and load distance steppless adjustable.

Loading speed steppless adjustable by potentiometer.

## **easyQ BPM**

### Bending- and Shear test machine for glued wood

---

Very stable, robust and torsionally stiff construction with steel frame.  
Electro-mechanical pressure unit.

Load measurement with force cell at an accuracy of < +/- 1% of final value.

Operation by push buttons or fully automatic with optional software.

Maximum burst force 50 kN at max. bearing distance of 1200 mm.  
Alternativ available: 100 kN / 2100 mm, 150 kN / 2650 mm or 250 kN / 6000 mm.

### **Options**

#### **Shear device**

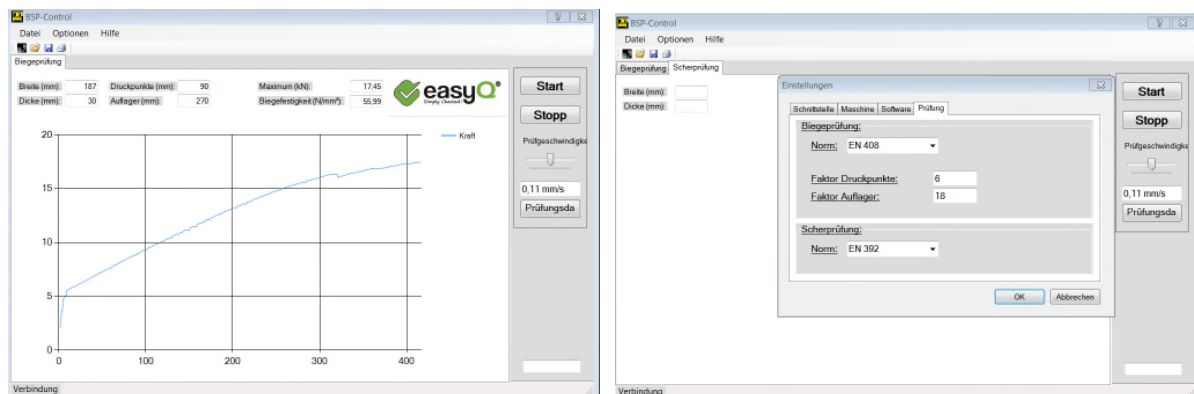
Optional available with shear device for determination of shear resistance of glued wood samples accord. EN14080. Further standards on request

#### **Control software**

Optional PC-Software for fully automatic control of test procedure as well as evaluation and storing of results in a excel-sheet.

Automatic recording of measured values and graphic representation in diagrams.

Without PC. When using our test-stand eQLab, software can be installed on this PC to control the machine.



### **Determining E-Modules**

Measurement device to determine of E-modules.

Only in combination with control software. Further only available from type 100 kN and higher.

**easyQ  BPM** : *Simply checked! Don't leave anything to change!*